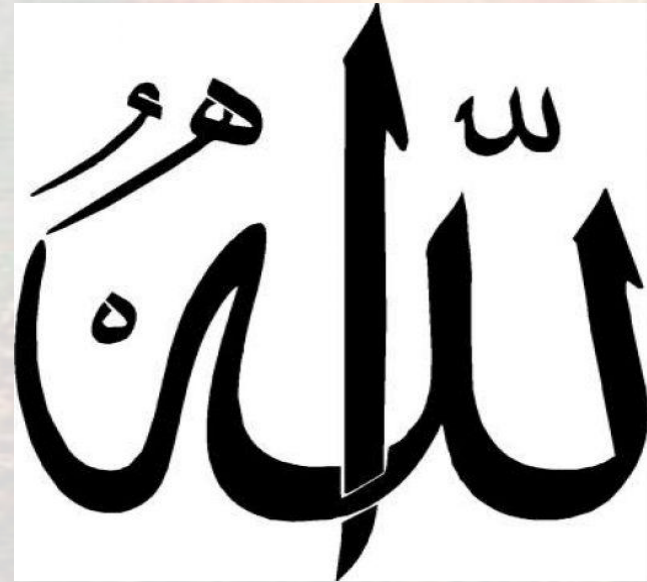
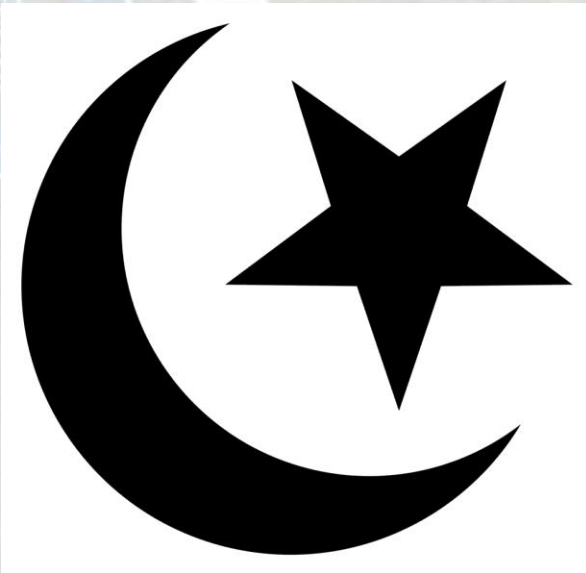


Principles of Islamic Art



Four Main Styles of Islamic Art

- Geometric
 - Designs based on mathematical shapes
- Calligraphic
 - Uses Arabic script as the focal point of a design.
- Organic/figural
 - Characterized by curving lines, human, animal, and flora
- Medallions
 - Normally contains a central image as the focal point

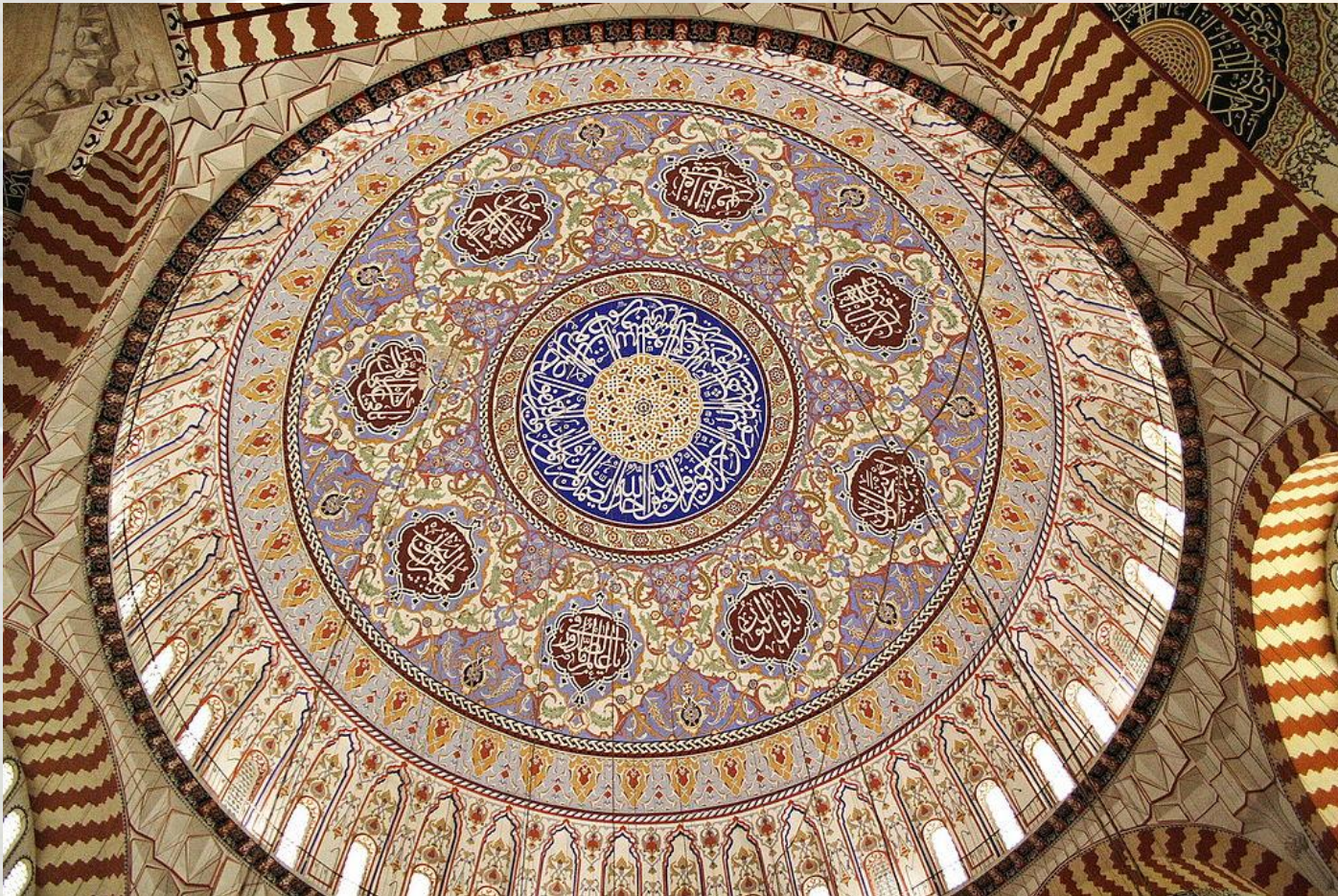
The Image of Mohammad

- Unlike in other major world religions it is expressly FORBIDDEN to display images of the prophet Mohammed in artwork



Dome of Selimiye Mosque

Edirne, Turkey
(completed 1575)



Folio from a Qur'an manuscript

ca. 1180

Eastern Iran or present-day Afghanistan



Art History

Bowl with a figure and birds

10th century

Attributed to Iran, Nishapur



Art History

Camel trapping (*asmalyk*)

19th century

Turkmenistan

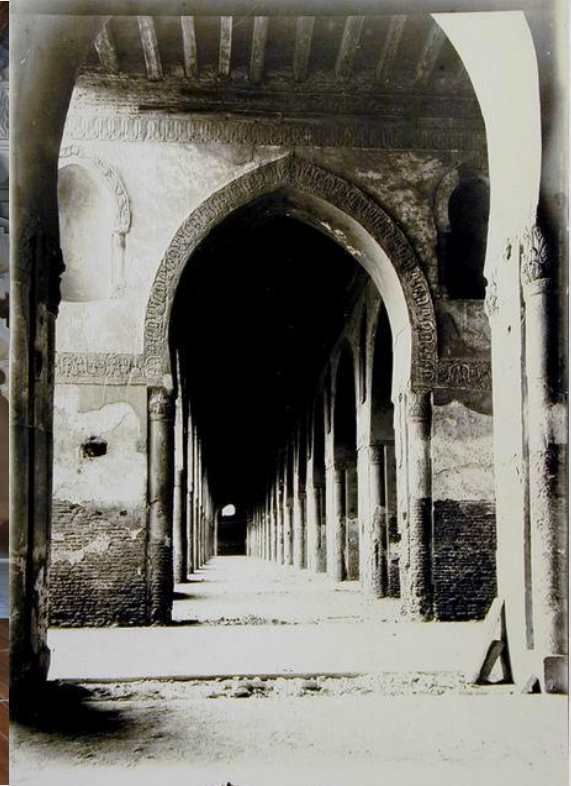
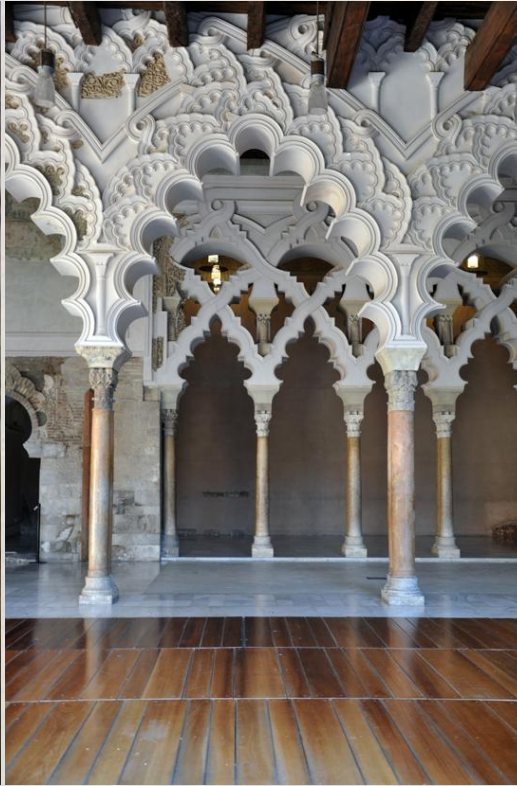


Principles of Islamic Architecture

- Domes
 - Typically a dome on a square building, with a plain tile exterior and elaborate mosaic interior
- Minaret
 - Typically located along the edges of a mosque. Used by a muezzin who sends out the call for prayer
- Arches
 - Different than prior arches. Islamic designs include the horseshoe arch, the transverse arch, the pointed arch and the cusped or multi-foil arch.

A H
r i

Islamic Arch Design



y

Mosque Design, Dome and Minarets

