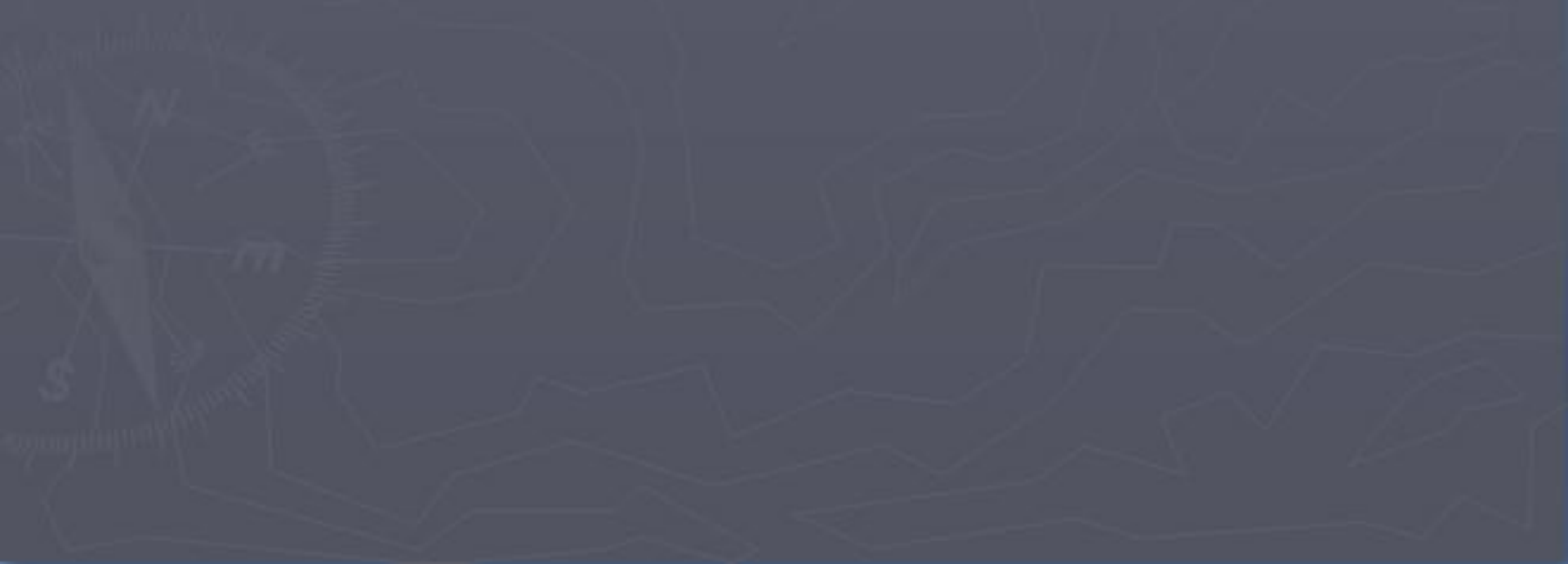
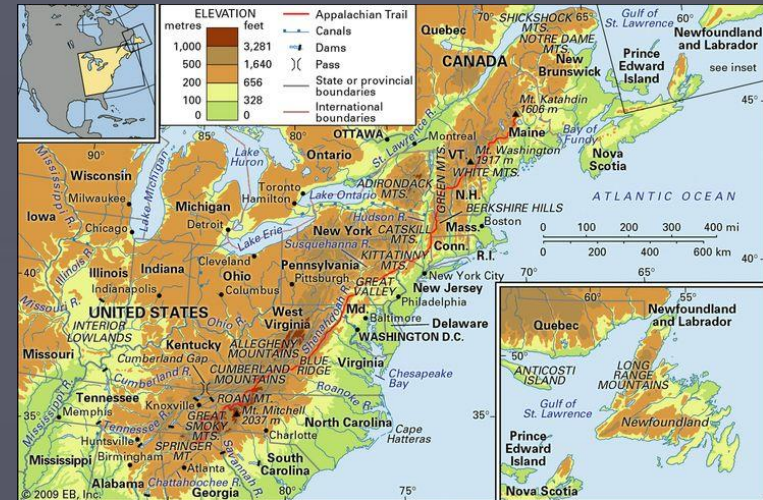


# Physical Regions of North America



# Appalachia/Coastal Lowlands

- Located along the Eastern United States and Canada
  - Comprised of series of mountain ranges
- Traditional divide between Eastern and Central United States
- Coastal Plain along Atlantic Coast
  - Swampy and muggy in the South



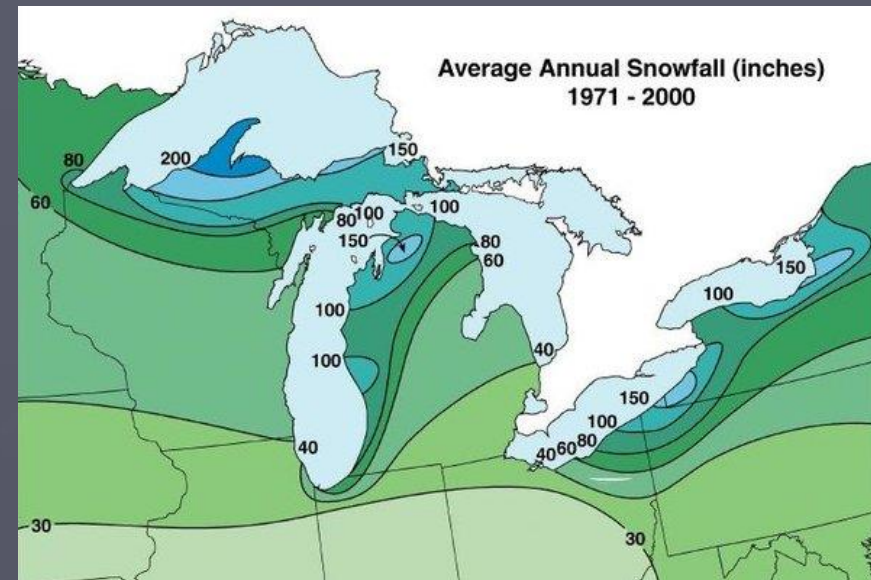
# The Great Lakes

- Located along the border of US and Canada
  - Connected to Atlantic Ocean via Erie Canal and St. Lawrence River
  - Used for intercontinental shipping
- Could also include lakes beyond traditional five
  - Lake Winnipeg, Great Slave Lake, Lake of the Woods, etc..



# Lake Effect

- In winter cold winds from Canada collect moisture from Great Lakes and then falls to the ground as precipitation once making landfall
  - Resulting in very large snow storms



# The Rivers of North America

- Large network of Rivers across North America
  - Largest are Missouri, Mississippi and Mackenzie
- Serve as transportation routes
  - Connecting inland areas to seas and oceans



# Canadian Shield

- Massive area of volcanic bedrock
  - A lot of it is exposed rock due to this layers of topsoil
- Sparsely populated
  - Permafrost makes farming difficult
  - Extremely cold winters
  - Mostly mining companies



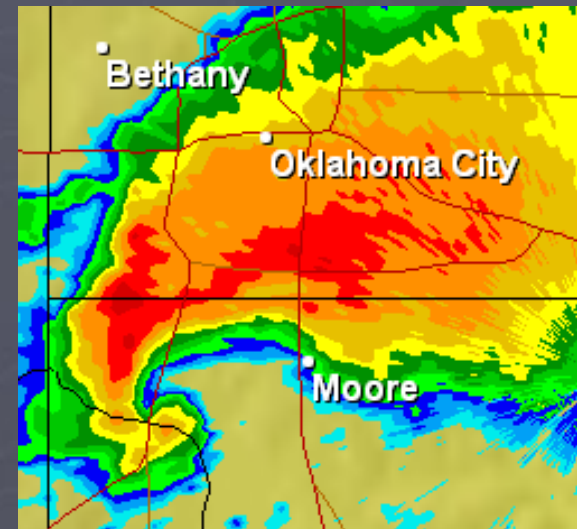
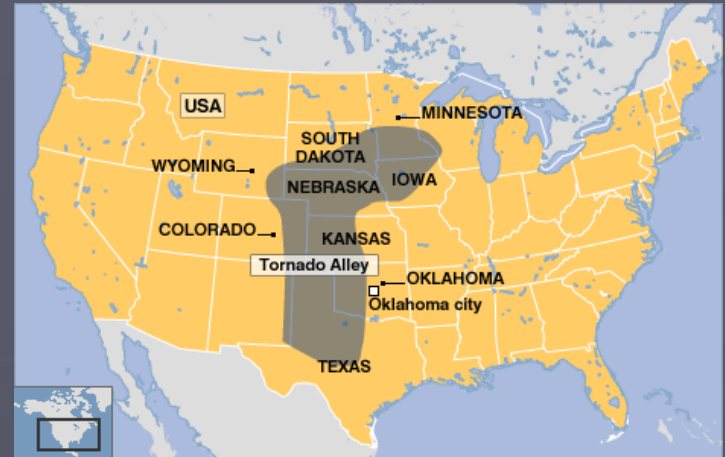
# Great Plains/Interior Plains

- Grassland Biome
  - Capable of supporting large-scale agriculture
- Located just east of Rocky Mountains
  - Partial rain shadow created by Rocky Mountains



# Tornado Alley

- Meeting point between colder winds of Rockies and Canada with warm Caribbean currents
  - Few tornadoes outside region
    - Few in rest of United States
    - Also South Africa





# The Mountain West

- System of mountains running from Alaska to Mexico
  - Brooks Range (Can and US)
  - Rocky Mountains (Can and US)
  - Sierra Nevada Mountains (US)
  - Cascade Mountains (US)
  - Great Alaskan Range (US)
  - Sierra Madres (Mex)
- Major tourist destinations
  - Vistas and mountain sports



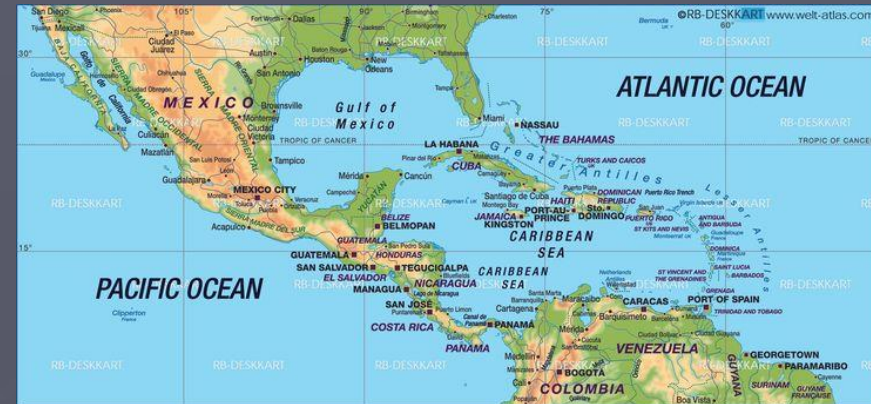
# The Mexican Plateau

- Arid to semi-arid region that comprises most of Mexico
  - Desert region in the North
  - Sierra Madre Occidental to West, Sierra Madre Oriental to the East



# The Caribbean/Gulf of Mexico

- Bodies of water between North America and South America
  - Containing many island countries and dependencies
- Warm tropical areas
  - Popular vacation destination
  - Warm winds from coast of Africa cause tropical storms and hurricanes



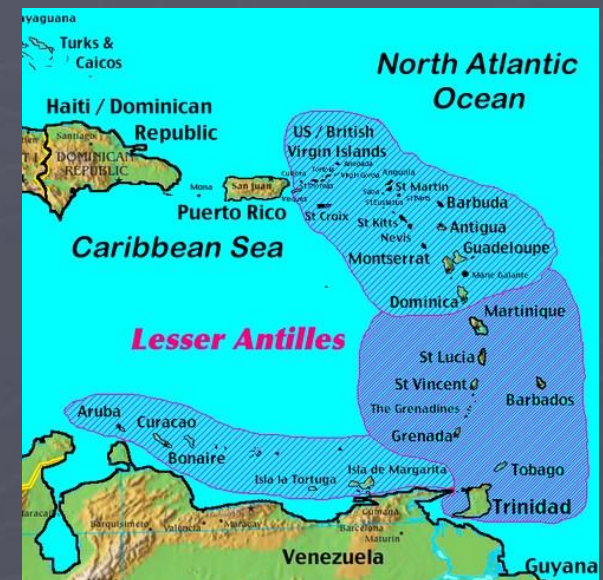
# The Yucatan

- Peninsula in the South East of Mexico
  - Tropical biome
  - Very popular tourist destination
- Home to Mayan civilization
  - Remnants of Mayan people still remain



# The Antilles

- Greater Antilles
  - Larger islands of Northern Caribbean
    - Largest are Cuba and Hispanola
    - Specialize in cash crops and tourism
- Lesser Antilles
  - Smaller islands of Eastern (Leeward) and Southern Caribbean (Windward)



# The Arctic

- Areas of United States, Canada, and Greenland (Den)
  - Home to indigenous peoples
  - People survive mostly by fishing
- Receding Sea Ice
  - Global warming is causing sea ice to melt
    - Loss of habitat for animals
    - Release of freshwater into ocean

