



# Manifest Destiny

From Sea to Shining Sea

# Manifest Destiny Defined

- “The American claim is by right of our Manifest Destiny to overspread and possess the whole of the continent which providence has given us for the development of the great experiment of liberty and self government entrusted to us.”
  - John L. O’Sullivan, *New York Morning News*, December 27, 1845
- Manifest Destiny: The belief that God wants the United States to own all of North America

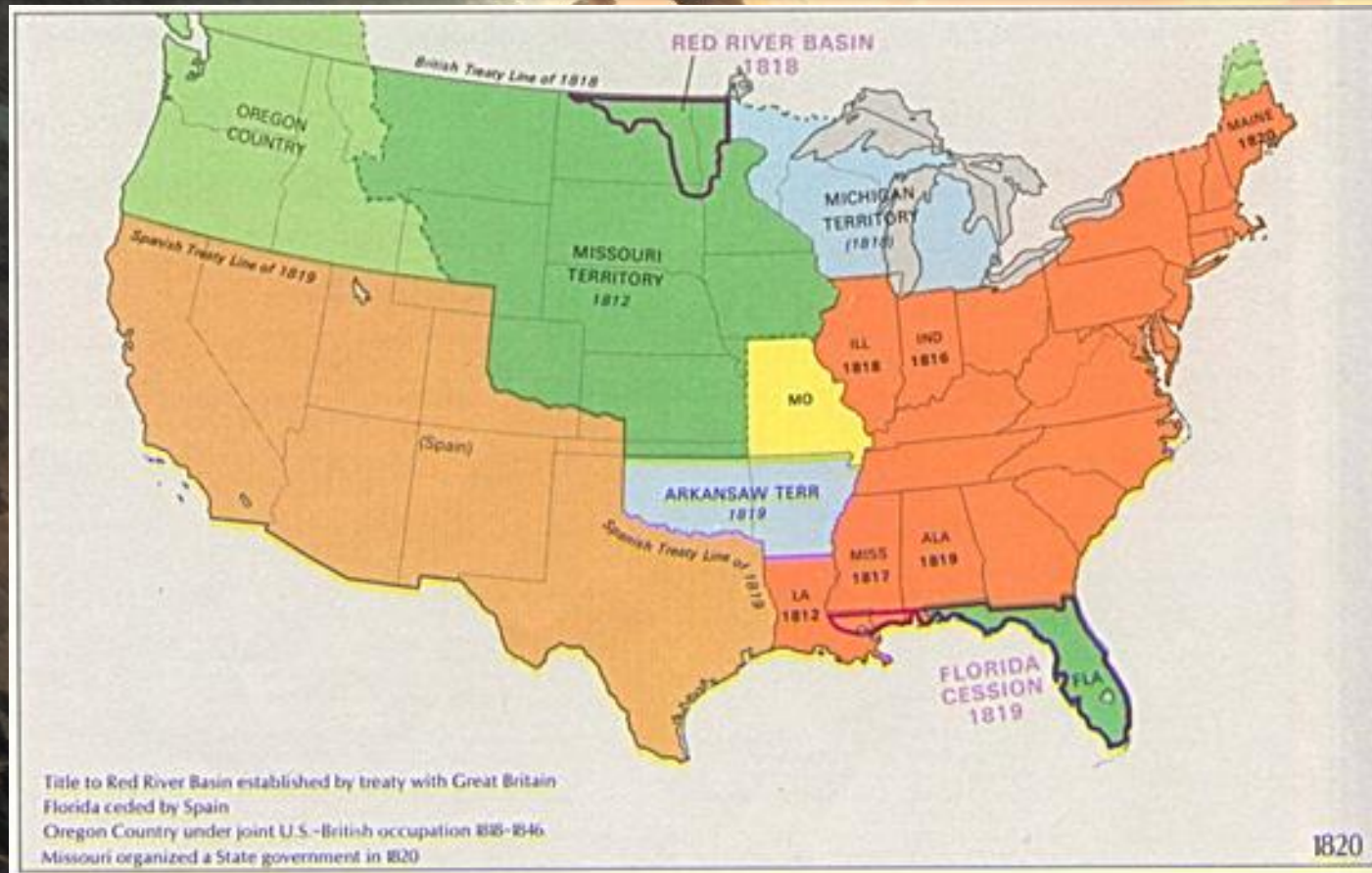


# Manifest Destiny



- How does the artist use colors to express their views on Manifest Destiny?
- What types of symbolism are used in this picture?

# The United States in 1820

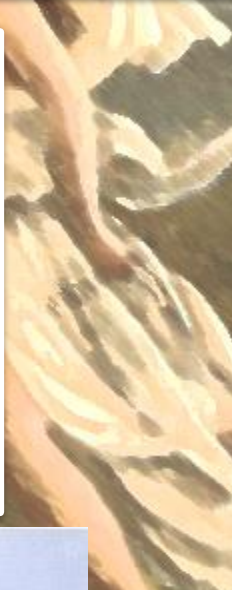


- The United States was slowly gaining more territory and making its way to the Pacific.



# Fur Trade

- Before settlement many whites had moved west to trade with Indians for Furs



# Oregon Territory

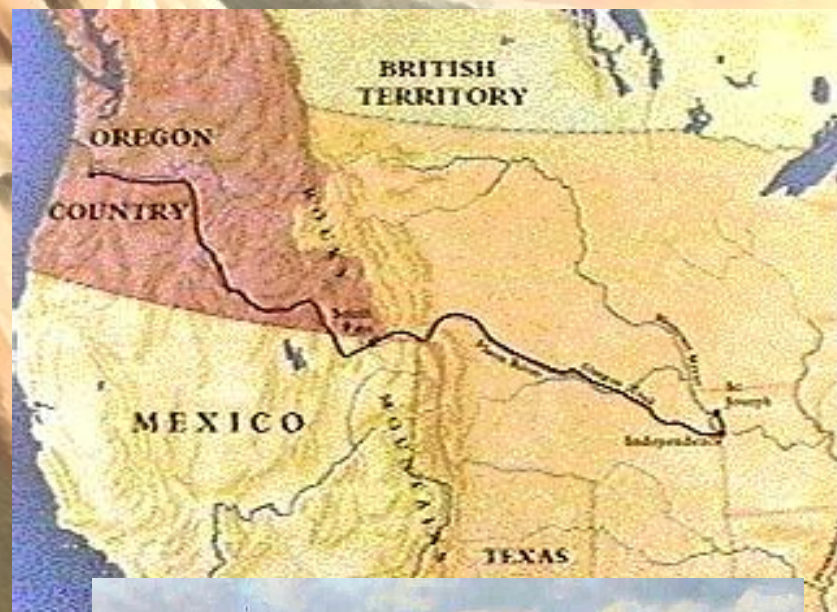
- Disputed land in western North America
  - British and Americans both claimed it
  - Both sides started encouraging settlement





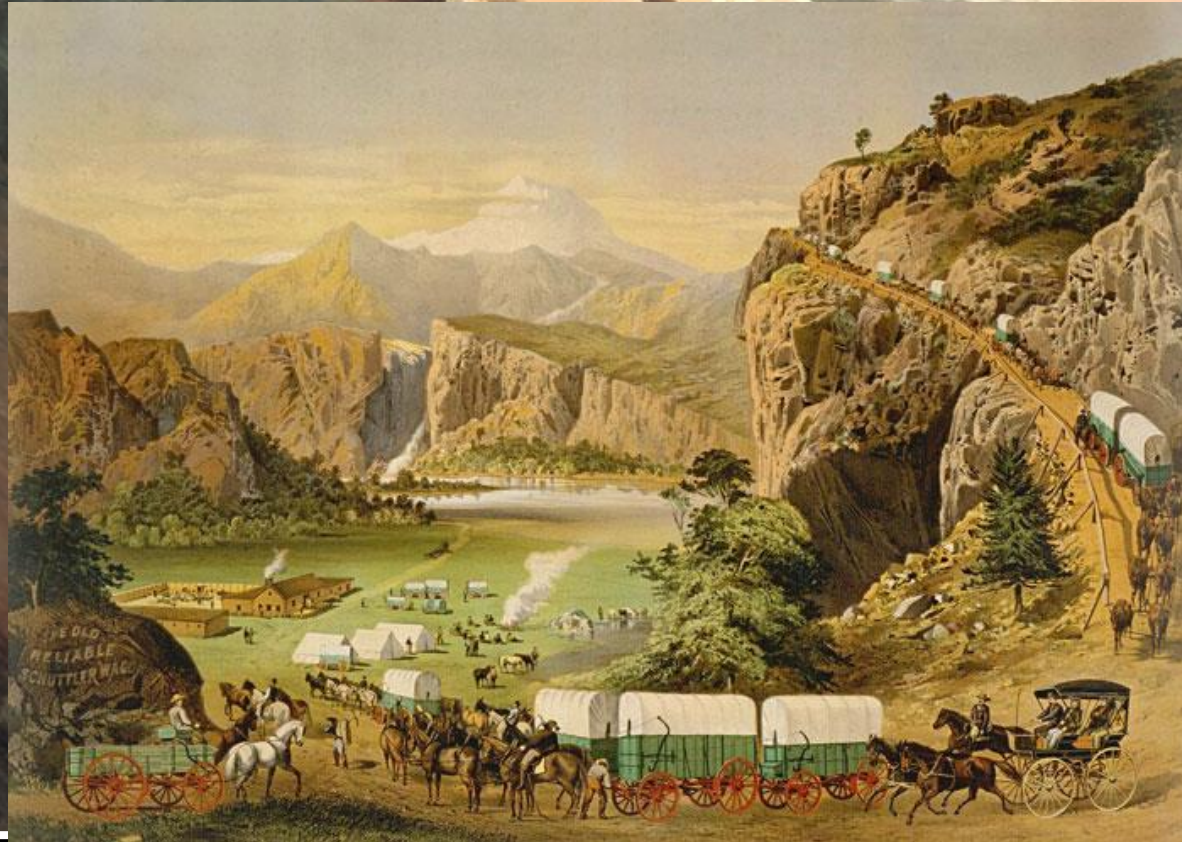
# Oregon Trail

- A great migration of people west to the Oregon Territory
  - During the 1830s and 1840s
  - More than 2,000 mile journey
  - Great Migration 1843
    - About 1000 people





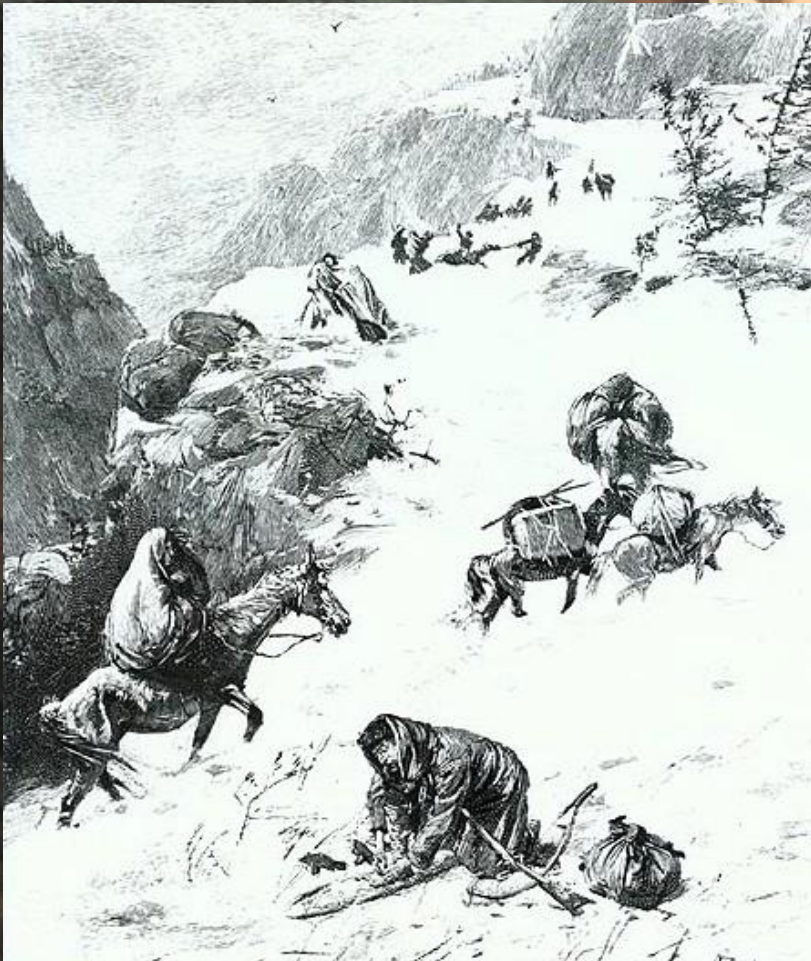
# Wagon Train



- Families moved went in covered wagons called “Prairie Schooners” that were pulled by horses or oxen



# Perils of the Trail: The Donner Party



- Family on its way to California got stuck in Rocky Mountains.
  - 48 of 87 members survived
  - Thought to have survived because of cannibalism



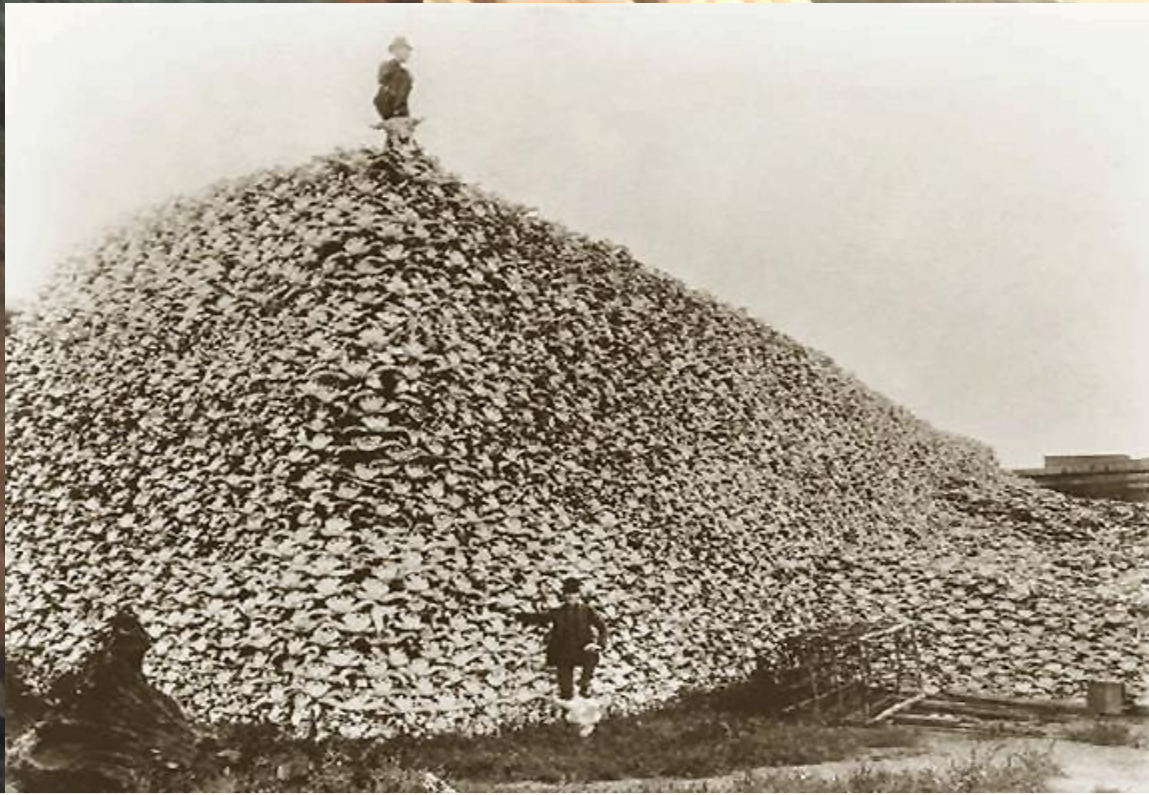
# A Land Already Occupied



- The further west the settlers moved the more Indian lands they took



# Impact of Expansion: The Buffalo



Emigrant Isaac Foster:

"The valley of the Platte for 200 miles; dotted with skeletons of buffalos; such a waste of the creatures God had made for man seems wicked, but every emigrant seems to wish to signalize himself by killing a buffalo."

# Journal

- What impact do you think whites moving into the area had on the American Indians who were already living there?

