

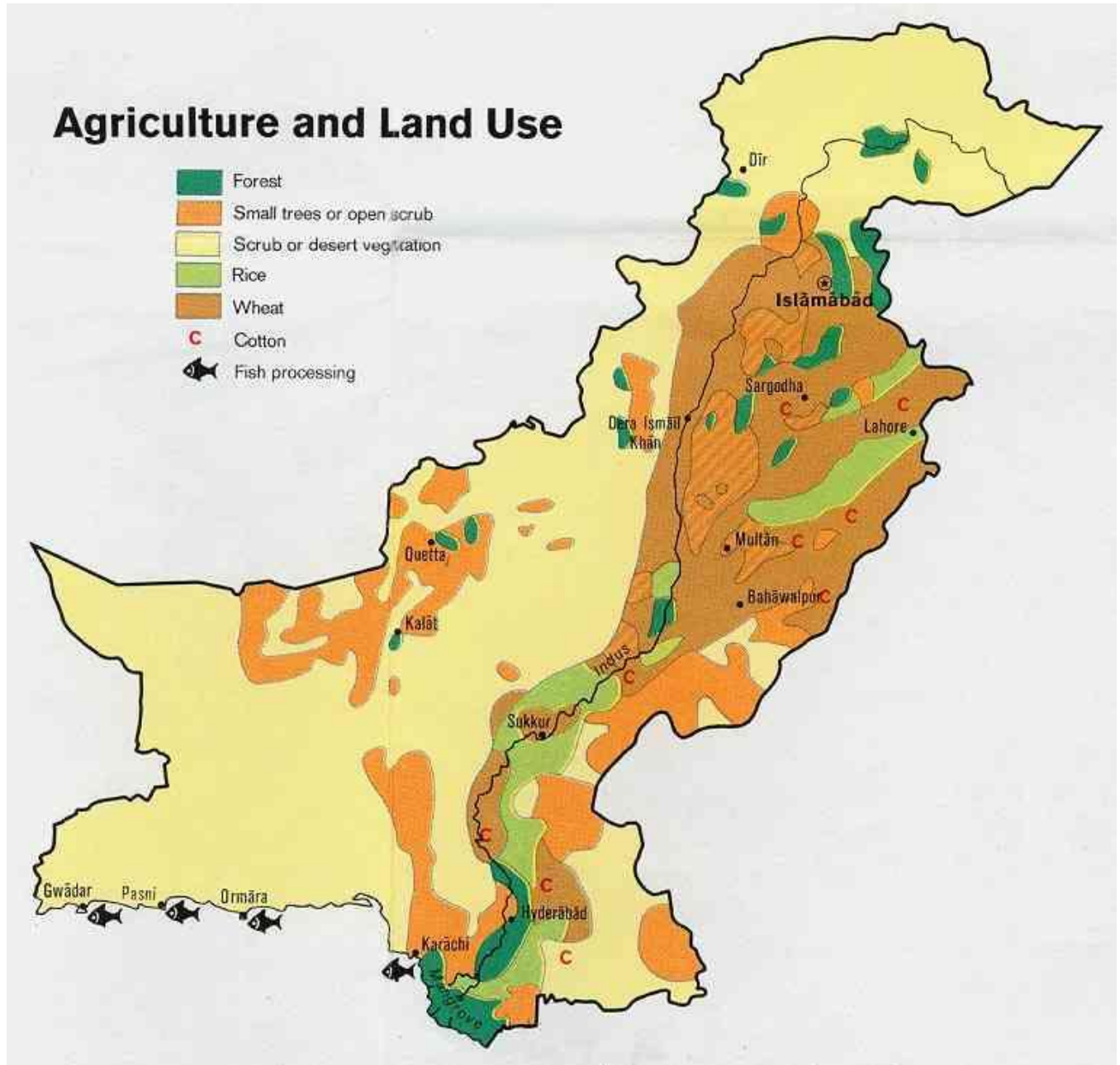


AP Human Geography

Industrial Development of Pakistan

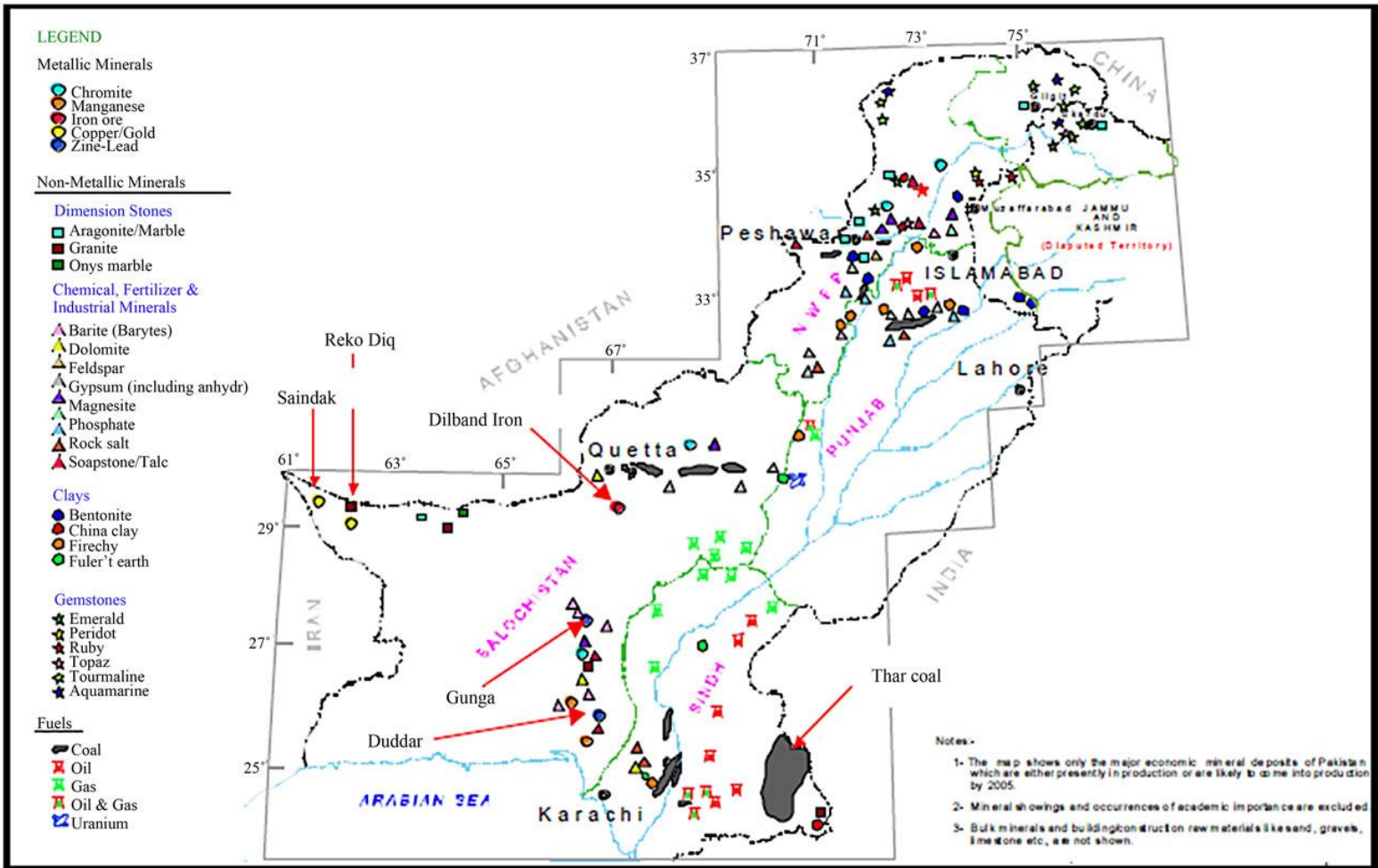
Name: _____
Section: _____
Score: ____/5

Directions: Use the following maps to answer questions about industrial development and spatial distribution in Pakistan.



Thought Questions:

1. Using the map above and the idea of the three factors of production identify the three main cities Pakistan should develop their textile industry in and explain why.



Thought Questions:

1. Which two areas of Pakistan are most likely the industrial centers? Answer using explanations of the presence of at least three different natural resources and how they relate to industry.

2. Use both maps to explain which city (Karachi, or Islamabad) would be better for the location of industries that produced building materials (Lumber and building rocks). Explain your answer using discussion of available resources and proximity.

3. Which city (Karachi, or Islamabad) is more ideal for the production of steel? Explain your answer using the principles of land, labor, and capital.