

A
r
t

H
i
s
t
o
r
y



Early Christian Art

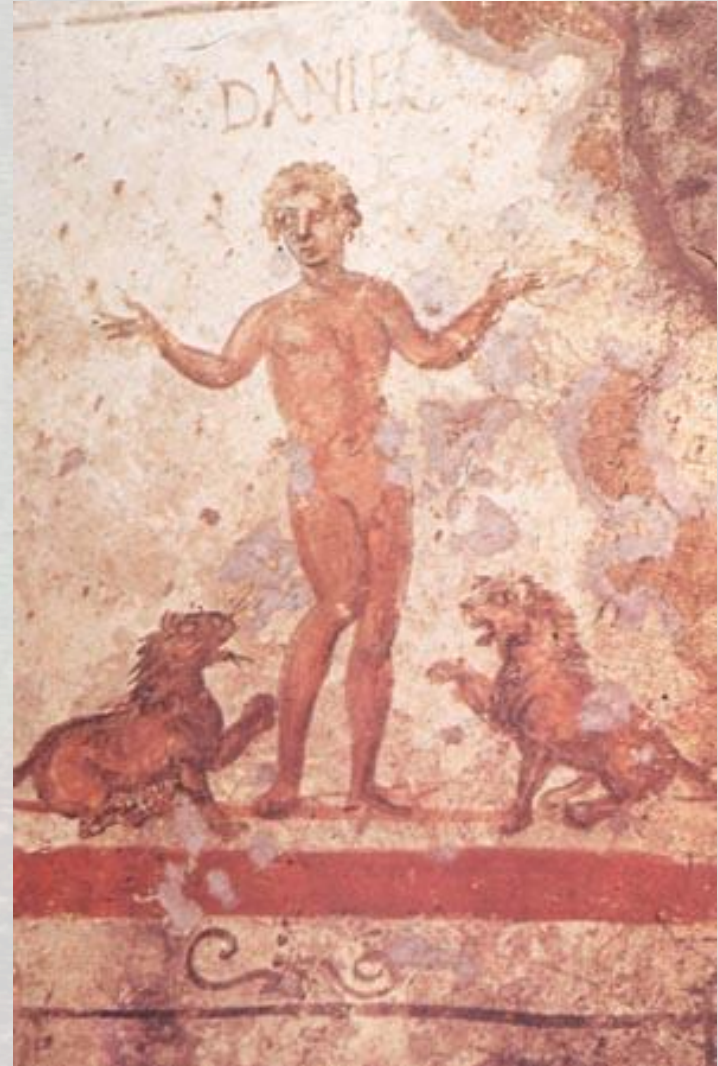


Christian Influences

- From the 3rd - 7th century
 - Early Christianity grew apart from Judaism
 - Christians had been limited in producing durable works of art
 - Almost always depictions of Biblical Scenes or symbolic of Christian teaching

Main forms of Artistic Expression

- Sculptures
 - Marble, Bronze, Ivory
- Wall Decorations
 - Frescos
 - Mosaics
- Architecture
 - Basilicas

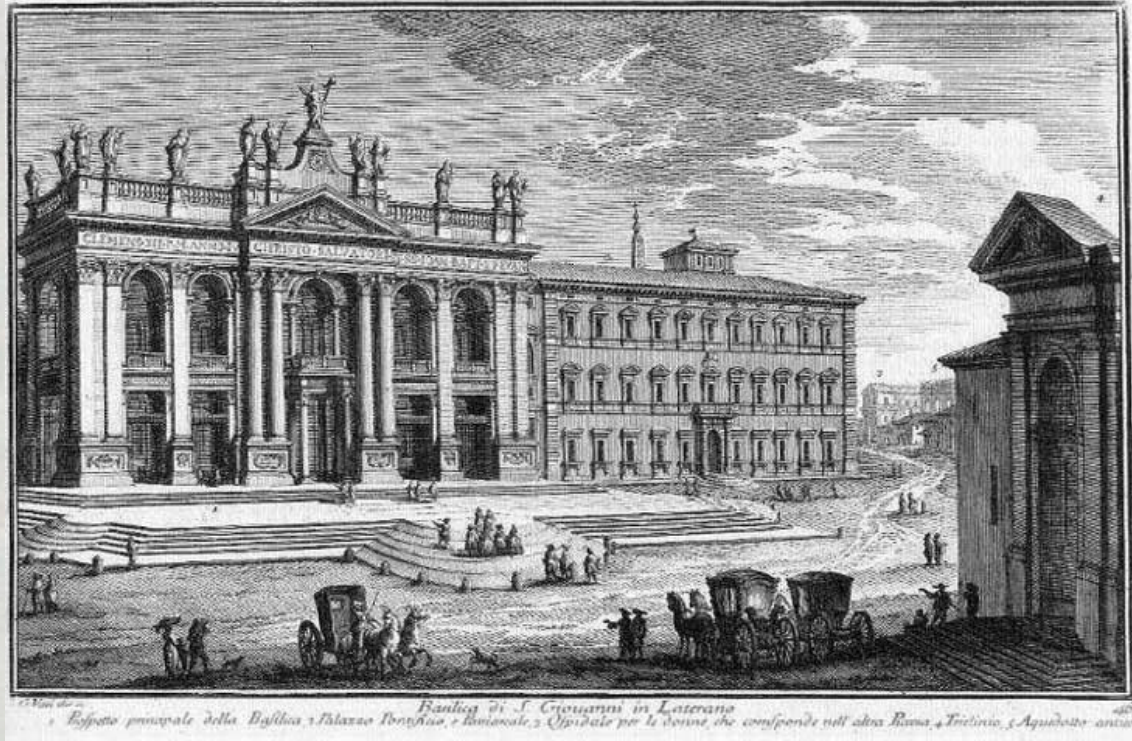


St. John Lateran Basilica

- Commissioned between 311-314 C.E.

Brick and Stone Construction

Oldest church in the world



St. John Lateran Basilica (Current Structure)



Symbolic Expression in Early Christianity

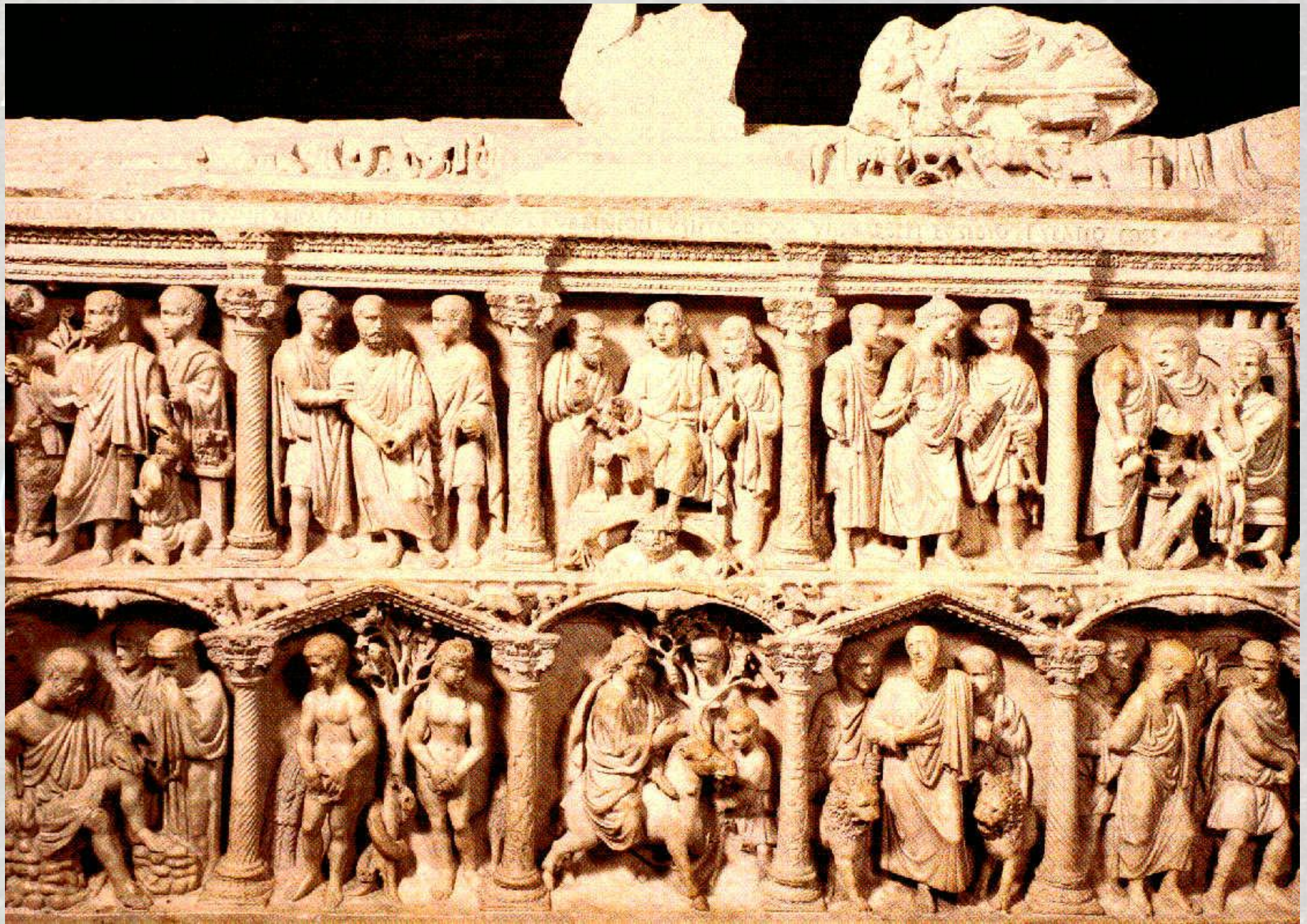
- Anchor, Fish, & Chi-Rho from the catacombs of Saint Sebastian
- 3rd Century C.E., Rome
- Soft Marble



Sarcophagus of Junius Bassus

- 359 C.E
 - Marble
- Sarcophagus of
Roman Senator





Art



Christ as the Good Shepherd



Christ as the Good Shepherd

- Located at the Mausoleum of Galla Placidia, Ravenna
- Mosaic ca. 425 C.E.



Christ as the Good Shepherd

