

A
r
t

Classical Greece Art and Architecture



H
i
s
t
o
r
y



Kotyle with a running hound

c. 670-650 B.C.E.

Artist: The Hound
Painter

Medium: Clay
Pottery

Produced in
Corinth, Greece



Jug with a griffin-head spout



c. 675-650 B.C.E.

Artist: Unknown

Medium: Clay
Pottery

Produced in
Cyclades Islands
in Aegean Sea,
perhaps Paros

A H
r t



y

Colossal marble head of Asklepios

c. 325-300 B.C.E.

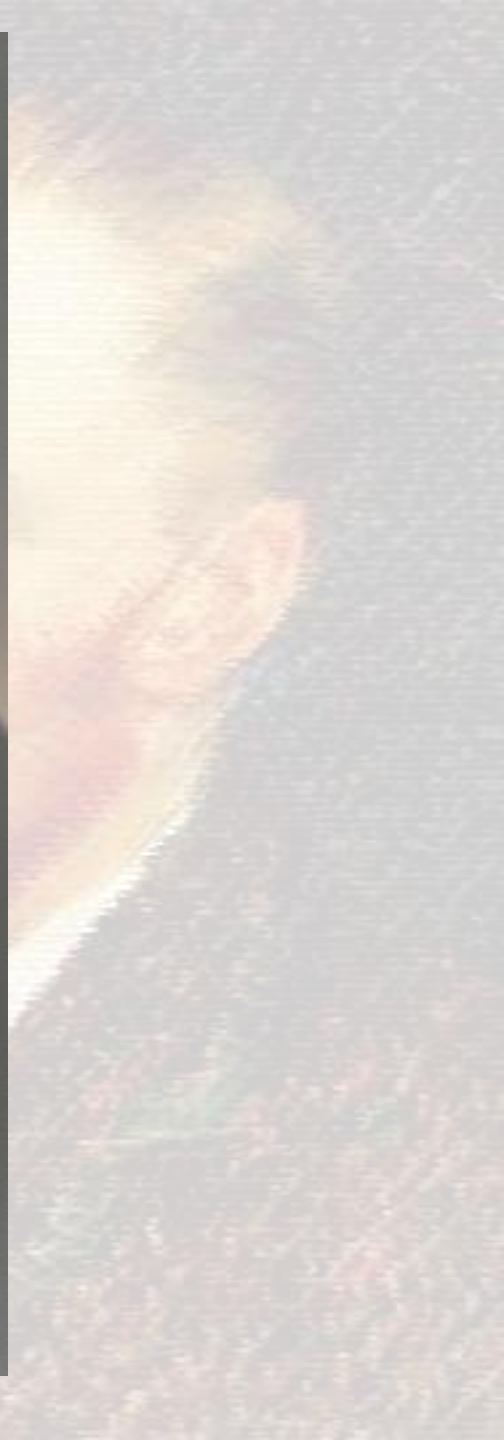
Artist: Unknown

Medium: Marble

Found on Mílos,
Southern Aegean,
Greece

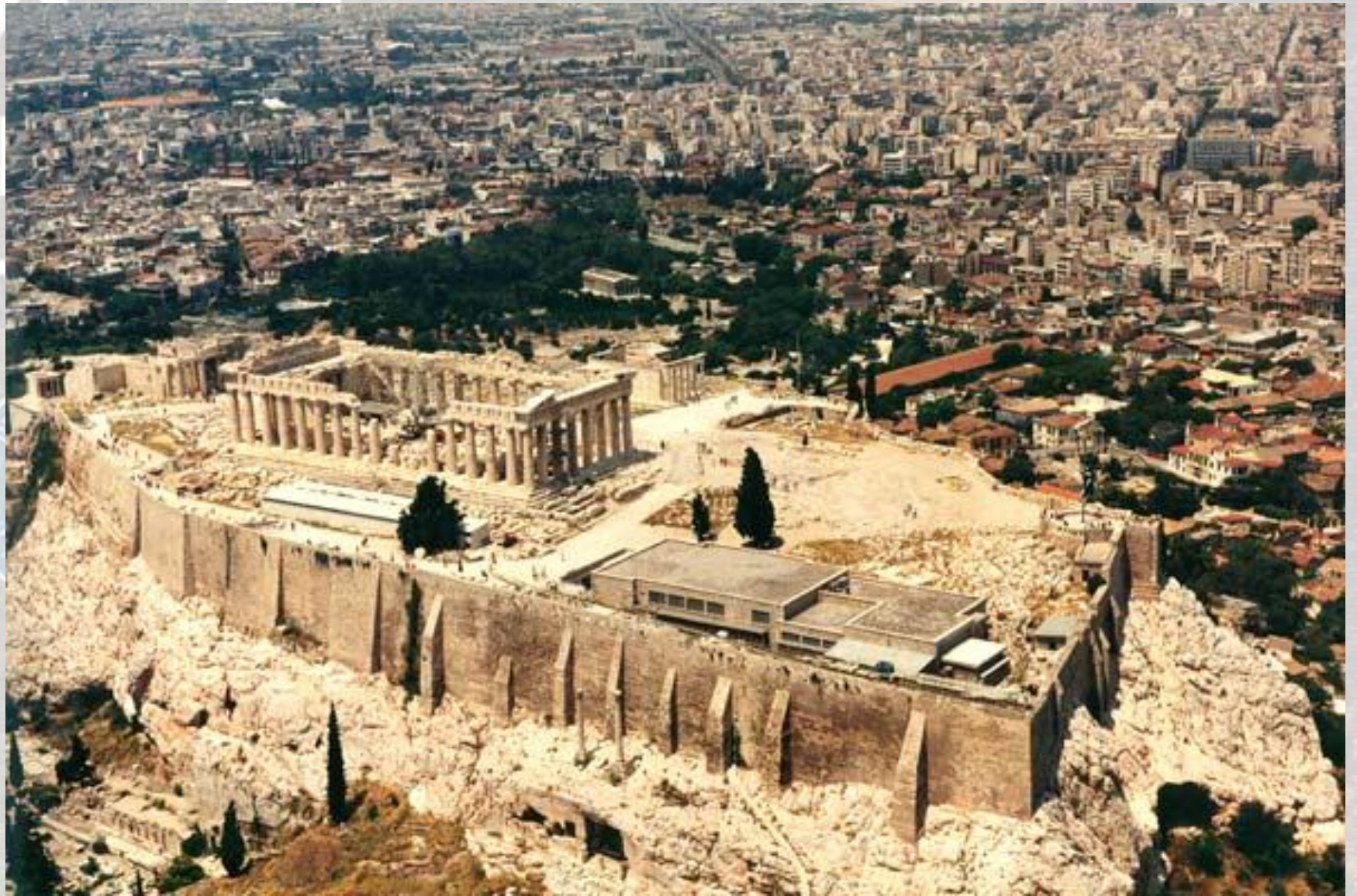


A
r
t



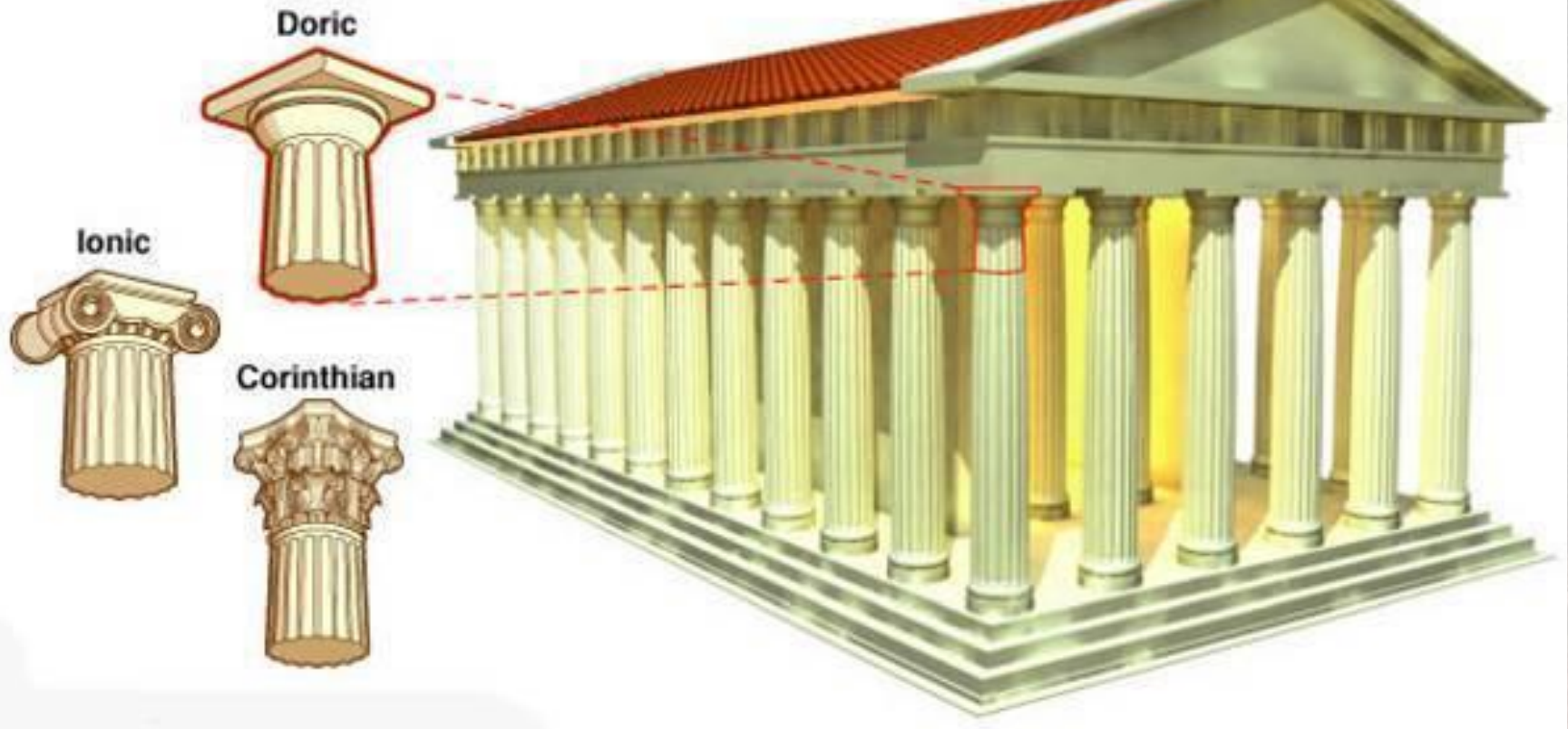
The Acropolis in Athens



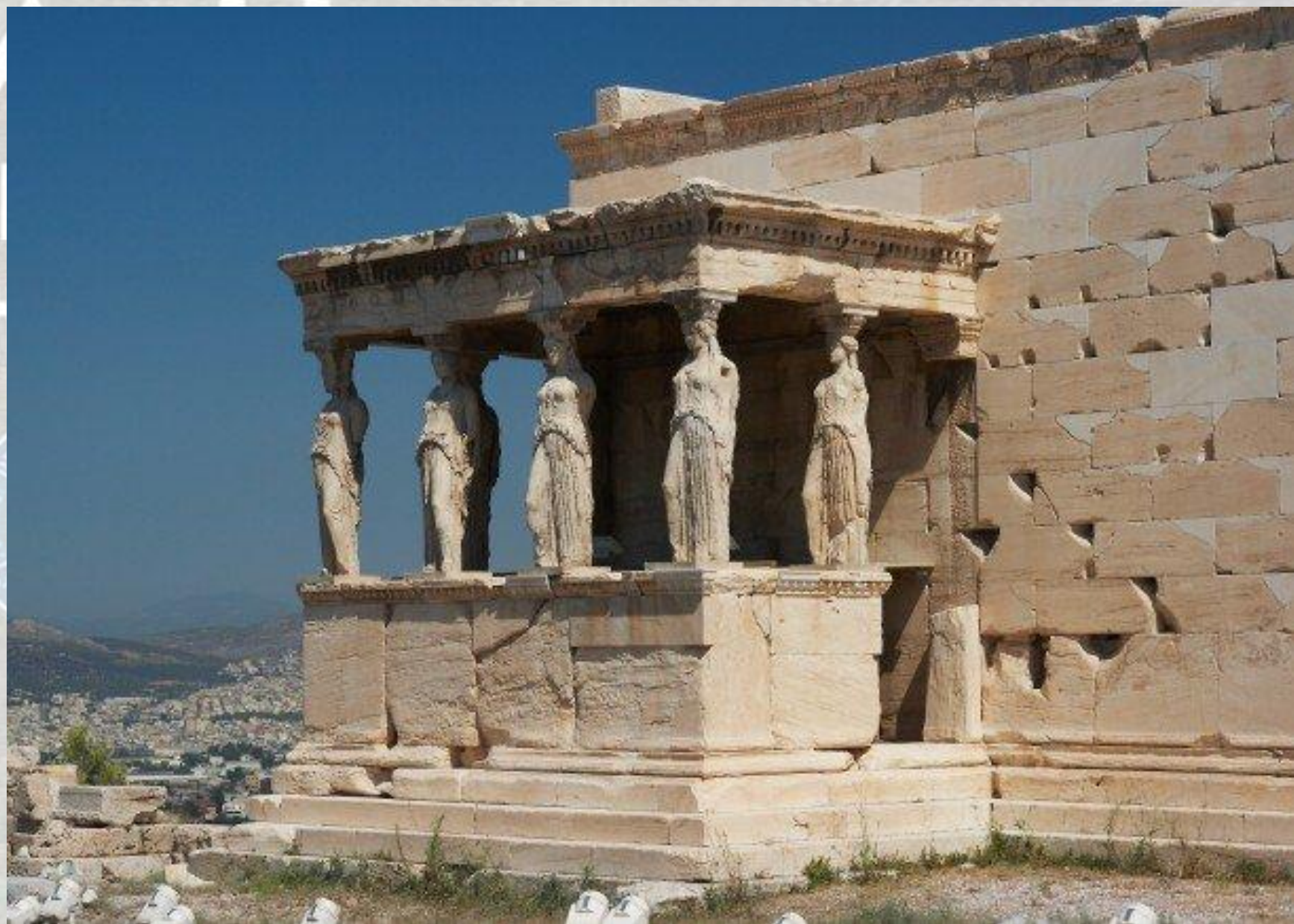


A H r i

Greek Capitals



y



Central scene of the east frieze of the Parthenon

c. 438-432 B.C.E.

Medium: Stone

The Acropolis, Athens, Greece, about 438-432 B.C.E.



Parthenon sculpture: Centaur and Lapith



Statue of Athena

438 B.C.E.

Sculptor: Phidias

Medium: Ivory and
Gold (Gilded), later
Bronze

Located in the
Acropolis (Athens)
until 5th century C.E.

