

A
r
t
H
i
s
t
o
r
y



Ancient Egyptian Funerary Artistic Traditions



The Mummification Process

- Embalming and removing of internal organs
- Body and organs dried in salt for a month
- Body cavity filled with linen
- Body is wrapped with cloth and placed in sarcophagus



Canopic Containers for internal Organs





Мумия жреца Гора Хв



Book of the Dead

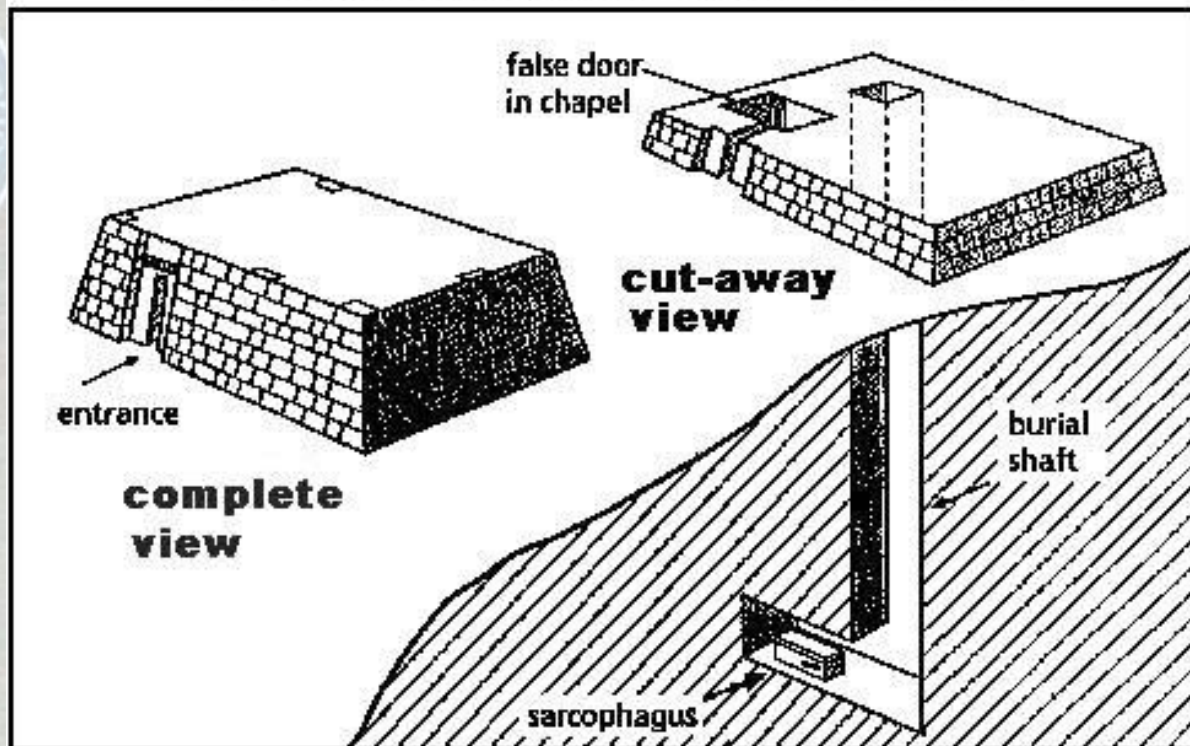
- A book filled with special spells and advice for the deceased to survive the “last judgment” and win eternal life



Tomb Building

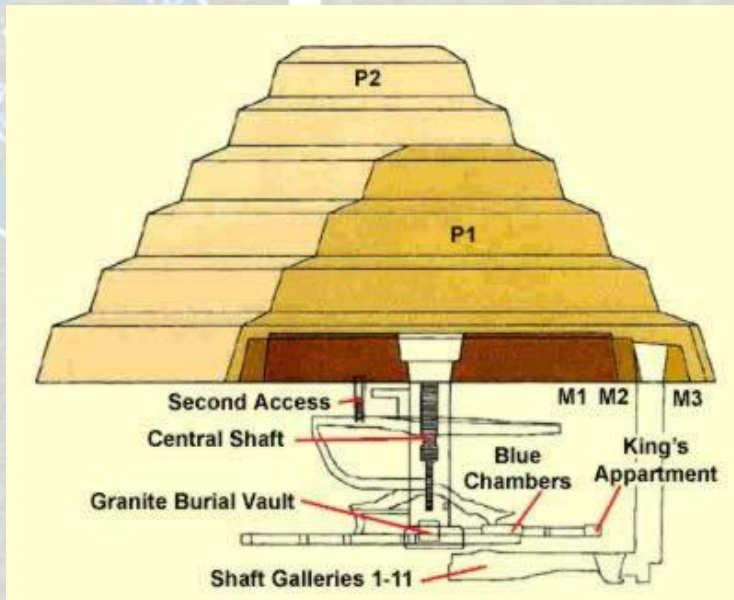
- Tombs started very basic but developed as a way to display power and wealth

A typical Old Kingdom simple mastaba tomb



Tomb Construction

- Initial pyramid construction was based on process of trial and error
 - Finding out what worked and what did not work

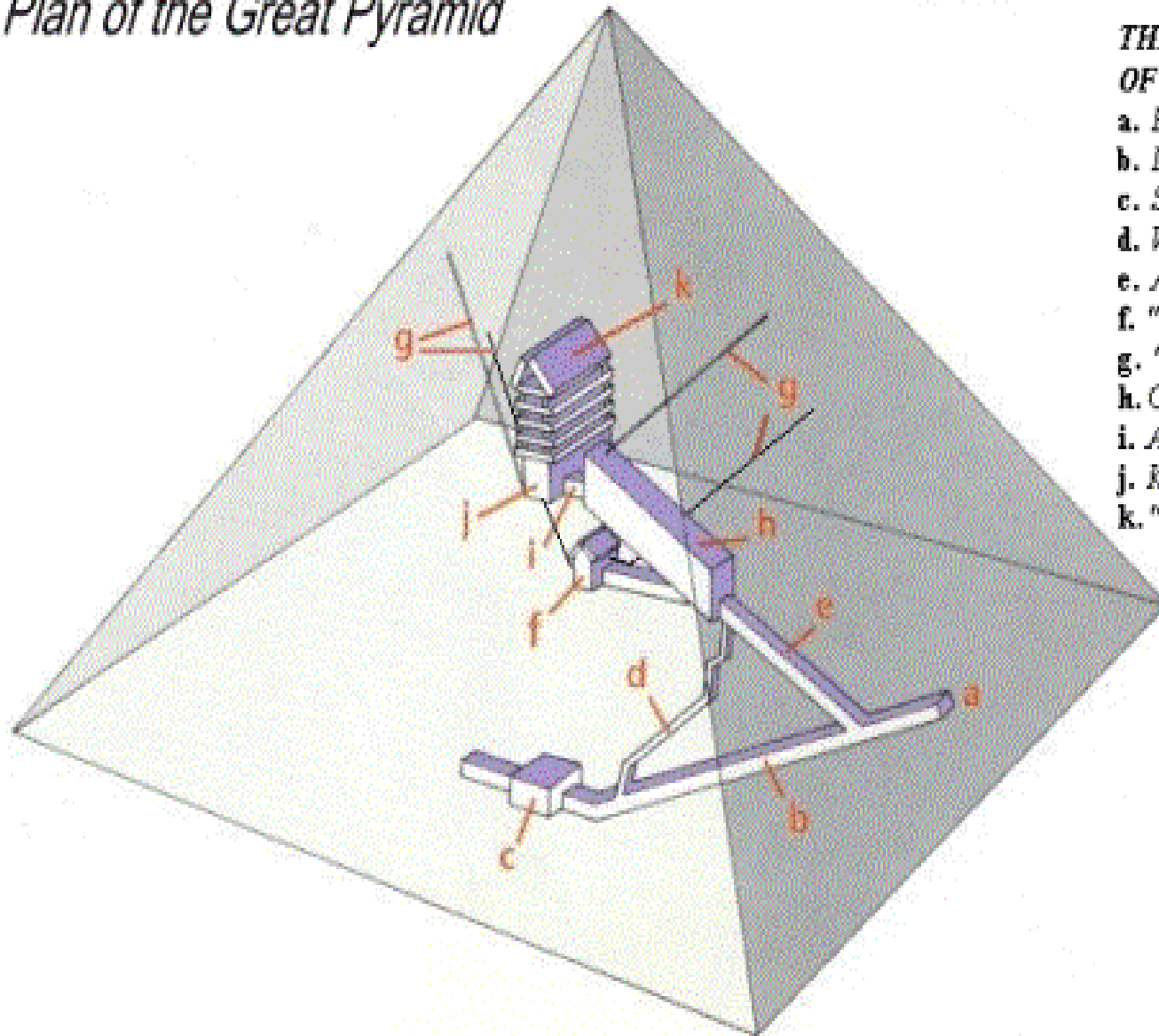


Djoser's Step Pyramid



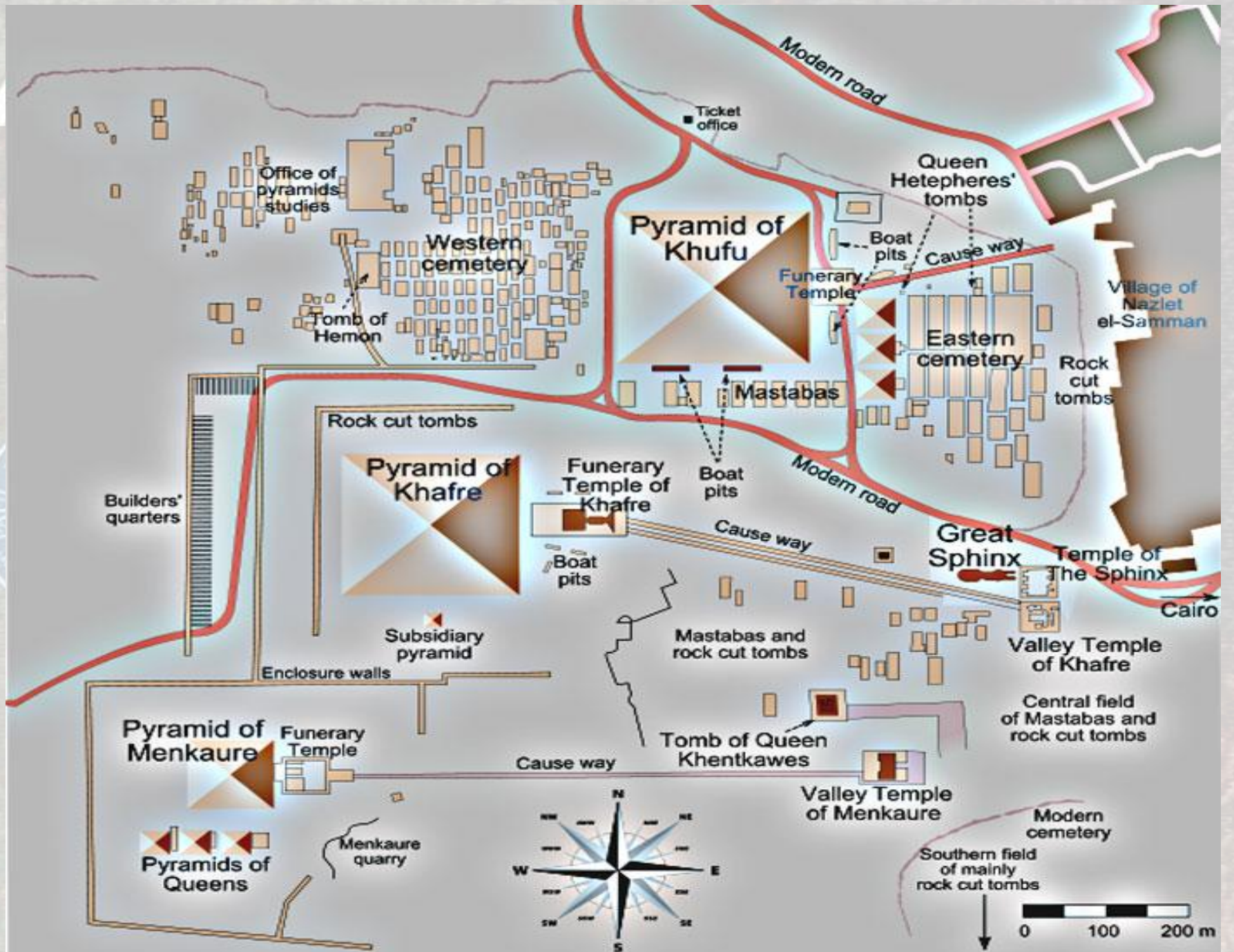
Sneferu's "Bent" Pyramid

Plan of the Great Pyramid



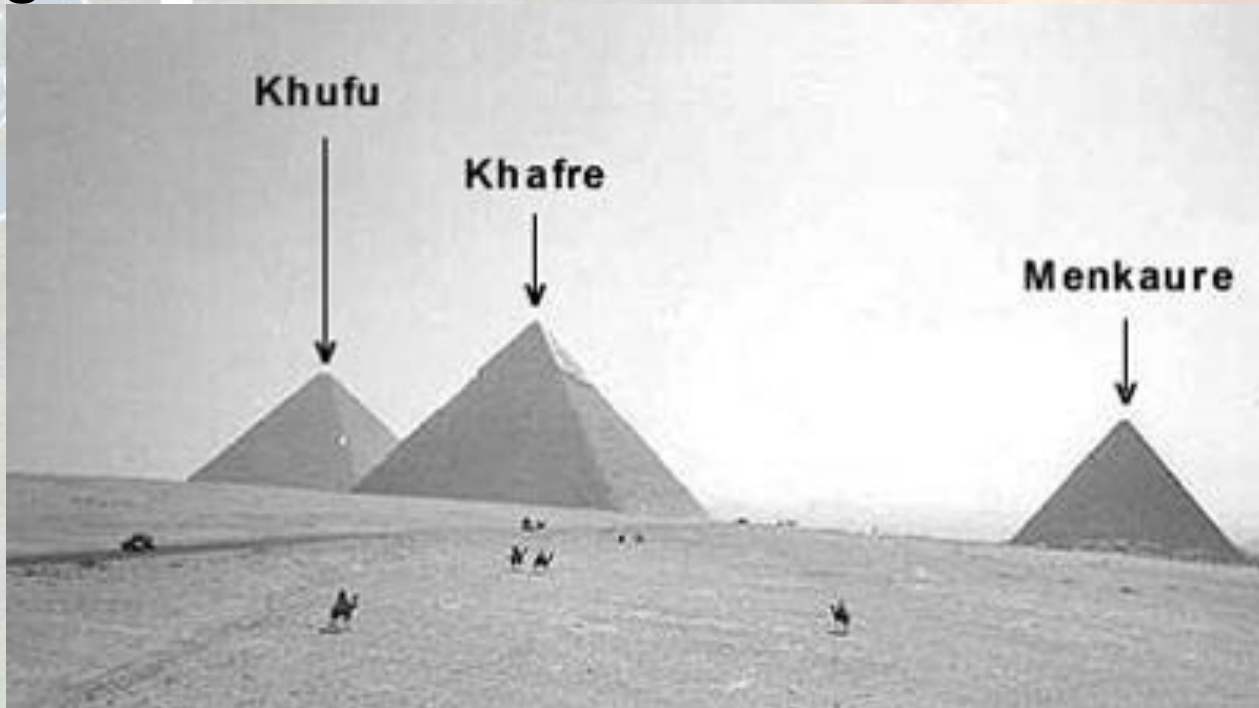
THE INTERNAL ARRANGEMENT OF THE PYRAMID OF KHUFU

- a. *Entrance*
- b. *Descending Passageway*
- c. *Subterranean Chamber*
- d. *Well Shaft*
- e. *Ascending Passageway*
- f. *"Queen's" Chamber*
- g. *"Ventilation Shafts"*
- h. *Grand Gallery*
- i. *Antechamber*
- j. *King's Chamber*
- k. *"Relieving Chambers"*

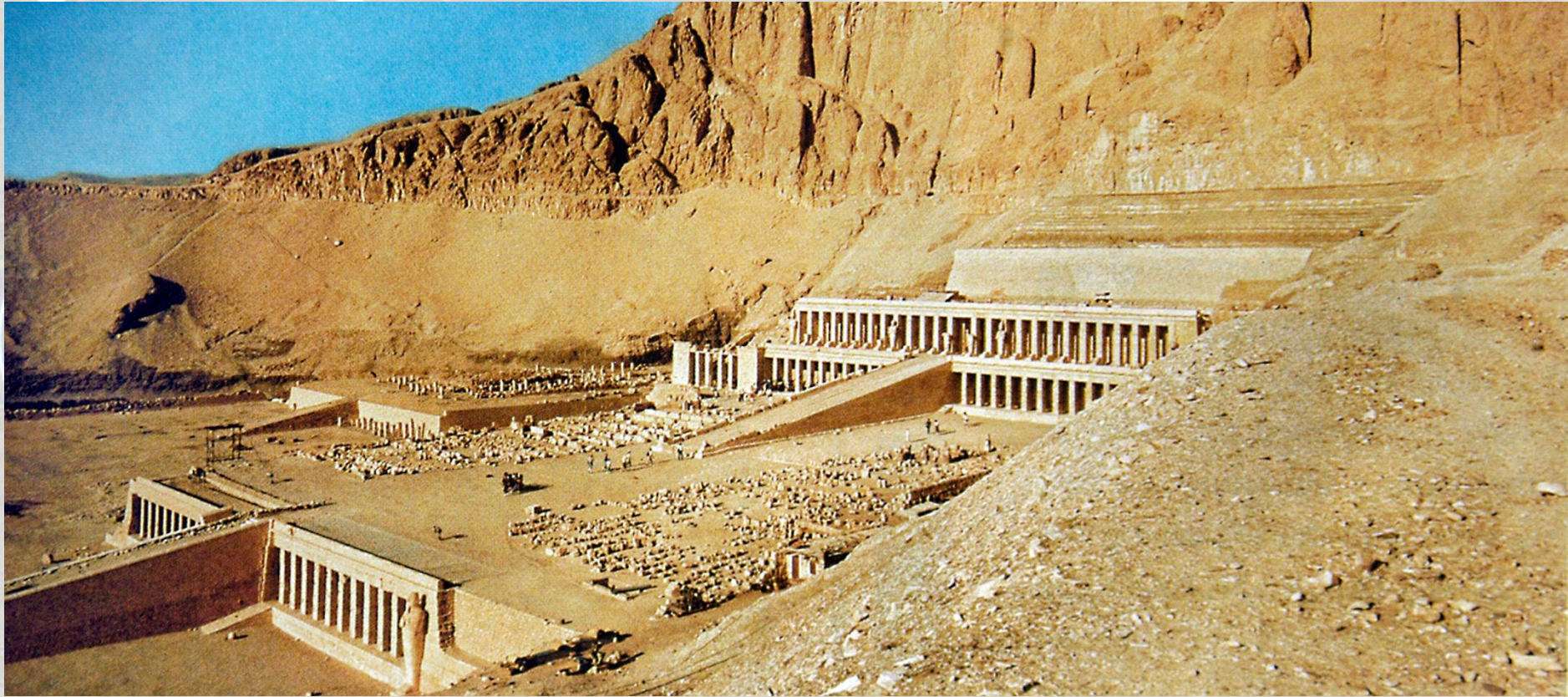


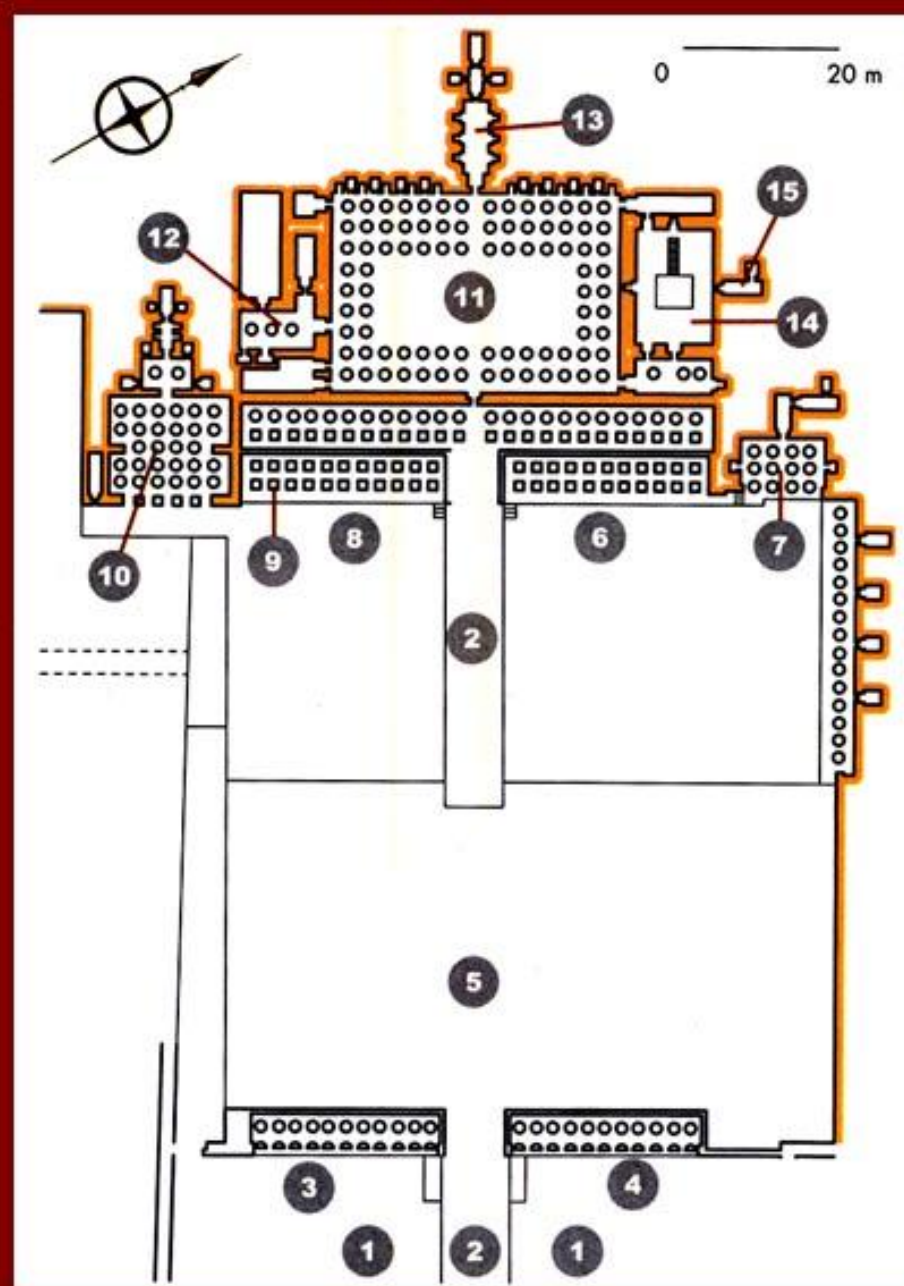
Architecture as a means for portraying greatness

- Political achievements emphasized by tomb size
 - Khafre's is actually small but built on higher ground



Funerary Temple of Hatshepsut – c. 1473-1458 B.C.E.





Hatshepsut temple Dayr al Bahri

- 1. First court*
- 2. Ramp*
- 3. Lower south colonnade*
- 4. Lower north colonnade*
- 5. Second courtyard*
- 6. Middle north colonnade*
- 7. Anubis shrine*
- 8. Middle south colonnade*
- 9. Punt visit reliefs*
- 10. Hathor shrine*
- 11. Upper terrace*
- 12. Royal worship chapels*
- 13. Amen and Royal
Family Chapel*
- 14. Ra-Harakhty courtyard*
- 15. Anubis upper chapel*

Tomb Decorations - Sculptures

- Tombs were often decorated with sculptures depicting the person whose tomb it is
 - Rarely freestanding

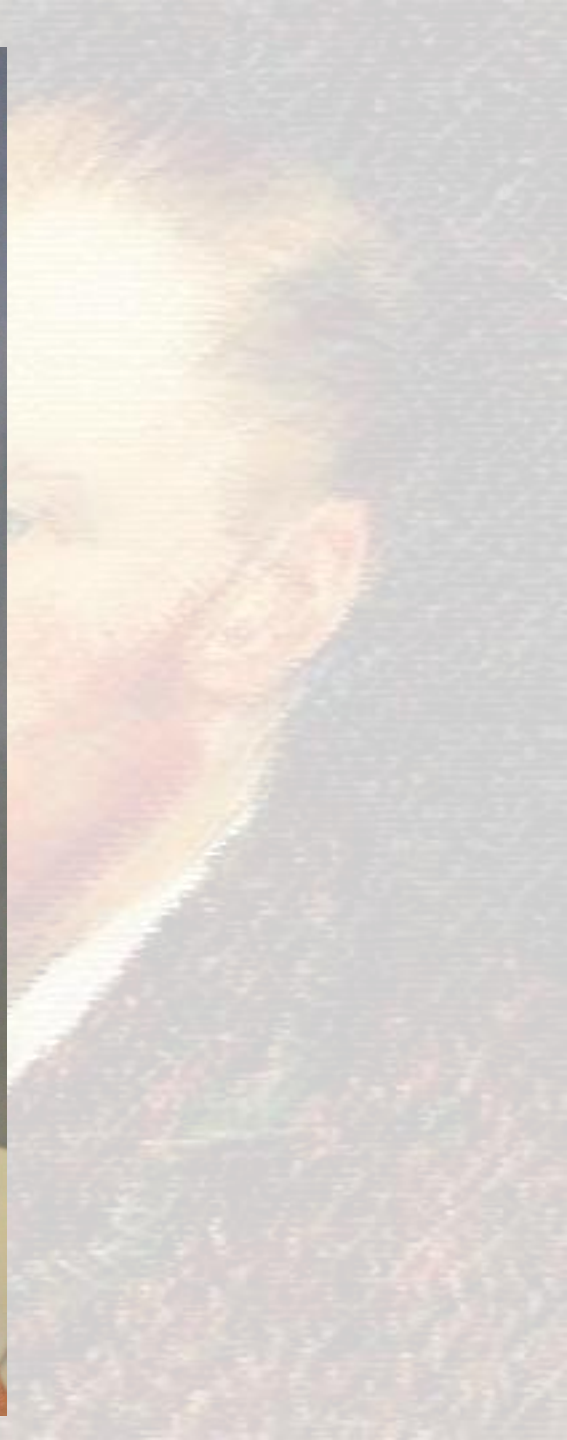


Khafra, from great pyramid, c. 2500 B.C.E.

Art



A
r
t



A H The Great Sphinx



Head of Khafra and body of a crouching lion

Tomb Decorations - Reliefs

- Walls and ceilings covered with religious, or political paintings.
 - Also momentous events from the person's life



Ti Watching a Hippopotamus Hunt, c. 2494-2345

Art

Nebamun Hunting in the Marshes – c. 1350 B.C.E.



Nebamun was a wealthy accountant

A H

The Coffin

- The container that actually held the mummy
 - Often covered in the story of the person it contained



A H The Sarcophagus

